



Engineering

Request for Proposal Amory – CPF WIFI Project

**HeidiJoy Harnegie
Vice President and General Manager**

August 22, 2025

INTRODUCTION, OVERVIEW, AND APPROACH

Request for Proposal (RFP)

Amory CPF WIFI Project

Issued by:

BCI Mississippi Broadband, LLC d/b/a MaxxSouth Broadband

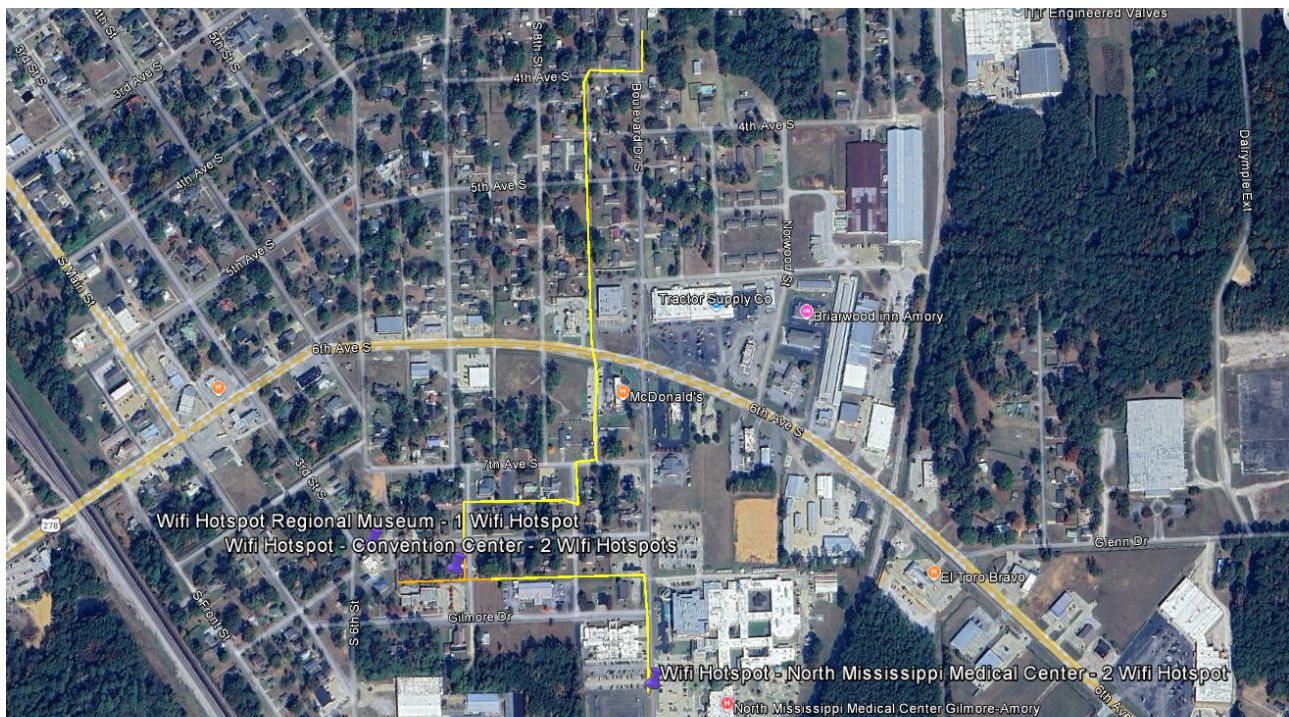
Release Date: August 22, 2025

Proposal Due Date: September 5, 2025

1. Introduction and Overview

BCI Mississippi Broadband, LLC d/b/a MaxxSouth Broadband (“MaxxSouth”) is seeking proposals from qualified engineering firms to provide **field work, engineering design, environmental assessment, site surveys, project management, and inspection services** for the Amory CPF WIFI Project.

The project includes **1.2 miles of aerial fiber construction** and the installation of **five (5) strategically placed WIFI access points** in the City of Amory, Monroe County, Mississippi. The selected firm must remain engaged for the entire project lifecycle, providing full documentation to satisfy **Capital Projects Fund (CPF) WIFI NOFO** requirements and conducting final inspections at project completion.



2. Project Summary

Scope of Work

- **Field Work & Design**
 - Conduct field surveys with accuracy of +/- 0.1' (preferably LiDAR-based).
 - Verify existing infrastructure meetpoints.
 - Prepare CAD-based designs for fiber construction that reflect the CPF WIFI build requirements and integrate existing designs, ensuring that fiber counts, pathways, and splice points are engineered to support long-term scalability and capacity needs.
 - Deliverables must include: plans and specifications (CAD designs), bill of materials (Excel), addresses passed with lat/long, and KMZ of final route design.
 - Upload As-Built into 3GIS.
- **Permitting**
 - Secure and manage all required permits (MDOT, City, County, ROW, pole attachments, environmental, etc.).
 - Prepare make-ready packages for pole owners, if required.
- **Environmental Review**
 - Complete environmental checklist for CPF.
 - Coordinate with MDAH (SHPO), FEMA, U.S. Fish & Wildlife, U.S. Army Corps of Engineers, and other agencies.
 - Review EPA Envirofacts, MS Oil & Gas Board, and groundwater databases.
 - Provide mitigation strategies for findings.
 - Conduct Environmental Justice review for impacts on low-income/minority populations.
- **Site Surveys & WIFI Access Point Planning**
 - Conduct site surveys for placement of WIFI access points (including heat map coverage).
 - Recommend placement considering coverage, safety, and aesthetics.
- **Project Management & Compliance**
 - Provide weekly progress updates to MaxxSouth and CPF funding agency.
 - Track compliance, reporting, and reimbursement requests.
 - Manage contractor procurement with all related reporting requirements.
 - Manage equipment and materials procurement with all related reporting requirements.
 - Project management of construction.
 - Attend required funding agency meetings and update portals.
 - Provide inspection services during and after construction.
 - Meet project completion date of November 14, 2025.

Project Area

- **1.2 miles** of aerial fiber construction in **Monroe County, MS.**
- Estimated drop length: ~550 feet each.
- **Five (5) WIFI Access Points:**
 1. Amory Regional Museum at 801 3rd St S, Amory, MS 38821 – Qty 1
 2. Amory Convention Center at 801 3rd St S, Amory, MS 38821 – Qty 2

3. North Mississippi Medical Center Gilmore-Amory at 1105 Earl Frye Blvd, Amory, MS 38821 – Qty 2

3. RFP Administration

- **Submission Instructions**
 - Proposals must be submitted in PDF format by email to:
 - Contact: **Justin Hicks**
 - Email: **justin.hicks@maxxsouth.com**
- **Deadline**
 - All proposals must be received by **September 5, 2025**. Late submissions will not be considered.
- **Questions & Inquiries**
 - All questions must be submitted via email to:
 - Contact: **Justin Hicks**
 - Email: **justin.hicks@maxxsouth.com**
- **General Conditions**
 - MaxxSouth reserves the right to:
 - Conduct discussions with vendors for clarification.
 - Waive minor irregularities.
 - Accept, reject, or negotiate proposals.
 - Cancel or amend this RFP at any time.
 - Select one, multiple, or no proposals.
 - Cancel an award if good faith negotiations are not completed within 15 days of award.
- **Contractor Requirements**
 - Must be properly **licensed and registered in Mississippi**.
 - Must have experience with Federal grant programs.

4. Proposal Requirements

1. Complete all sections of the RFP response and include required attachments.
2. Demonstrate ability to satisfy CPF WIFI NOFO compliance requirements.
3. Provide detailed pricing by task (see pricing table below).
4. Demonstrate qualifications per the scoring rubric.

5. Scoring Rubric (100 Points)

Category	Points	Requirement	Yes/No
Licensed in Mississippi, with local office	15	Must be licensed and have local presence	
Environmental assessment experience	15	Demonstrated past work	
Use of LiDAR-based survey equipment	15	Geospatial/mapping capabilities	
In-house inspectors on staff	15	Must provide inspection services	
Experience with WIFI site surveys	10	Prior project examples	
Experience with CPF WIFI projects in Mississippi	15	Must provide references	
Price for full scope of RFP	15	Pricing based on all responses	

6. Pricing Table

Task Description	Price
Fieldwork and Design	
Permitting	
Environmental Assessment	
Site Surveys for Access Point Placement	
Material and Equipment Procurement	
Contractor Selection Process	
Network Testing	
Inspections	
As-Builts	
Total Engineering	

7. Proposal Submission Page

Firm Name and Address: _____

Officer Name: _____

Signature of Officer: _____

Date: _____